

# Bourdon Tube Test Gauges in portable case

NCS: 160 Accuracy:  
Class 0.6 EN 837-1

Model **RFPB**

## Application

Portable gauges for pressure measurement of gaseous or liquid media, that do not corrode copper alloys respectively 1.4571 (316 stainless steel) (option) and monitoring of pressure gauges by connection to pressure gauge valve with test connection M 20x1.5, test connection 60 x 25 x 10 or circular test flange.

Pressure ranges calibrated up to 0-25 bar (0-300 psi) for gaseous media, dial inscription "G", for 0-40 bar (0-600 psi) and above calibrated for liquid media, dial inscription "F".

## Nominal Case Size (NCS)

160 mm (6")

## Accuracy (EN 837-1)

Class 0.6

## Pressure Ranges (EN 837-1)

0-0.6 to 0-600 bar (0-10 to 0-10,000 psi)  
also corresponding vacuum- and compound ranges

## Pressure Limitation

Steady load: full scale value  
Dynamic load: 90% of full scale value  
Overload: 1.3 x full scale value

## Case Protection Type

IP 54

**Further information** on advantages, pressure limitations, temperature resistance, metrological features and pressure ranges of the available bourdon tube test gauges models class 0.6 according to EN 837-1 can be found in **model overview 2000**.

## Standard Version

### Connection

Lateral at 3 o'clock, angle pressure gauge valve with 2 clamping sleeves M20x1.5 female and accessories

### Wetted Parts

Order code -1: connection: = brass

#### bourdon tube:

≤ 40 bar (600 psi) = bronze, c-form, soft-soldered  
60 bar (800 psi) = copper-beryllium, c-form,  
silver brazed  
≥ 100 bar (1,500 psi) = 1.4571 (316 stainless steel),  
helical, silver brazed

### Movement

Brass / German silver

### Dial

Aluminum, black figures, white background

### Pointer

Knife edge pointer, aluminum, black

### Case and Ring

Steel black, tight bayonet ring

### Window

Instrument glass



## Accessories (included in delivery)

- 1 portable case 400 x 380 x 100 plastic black
- 1 fitting M 20 x 1.5 / test flange 60 x 25 x 10
- 2 fixing screws M 8
- 2 hexagon nuts M 8
- 2 mounting spacers
- 2 flat sealings Cu
- bracket for circular test flange

## Options among others

- test certificate 3.1 according to EN 10204 for accuracy
- case stainless steel, model RFPCh 160-1
- wetted parts 1.4571, angle pressure gauge valve and accessories made of 1.4571, models RFPB 160-3 or RFPCh 160-3
- special adjustment, e.g. up to 0-160 bar (0-2,000 psi) with air, dial inscription G, upon request

## Ordering Information:

Basic model/ nominal case size:	<b>RFPB 160</b> <b>RFPCh 160</b>
Order code for wetted material:	-1 (standard) -3 (option)
Pressure range:	according to EN 837-1, e.g. <b>0-6 bar</b> (compare model overview 2000)
Special versions:	(see above)

### Examples:

- RFPB 160-1, 0-6 bar
- RFPCh 160-3, -1/+9 bar



## INSTRUMENTS TO INDUSTRY LTD

Euro Works - Hawksley Industrial Estate - Hawksley Street  
Oldham - OL8 4PQ - United Kingdom

T: +44 (0)161 652 7741

F: +44 (0)161 621 0389

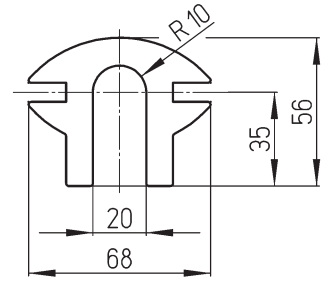
E: sales@itiuk.com

W: www.itruk.com

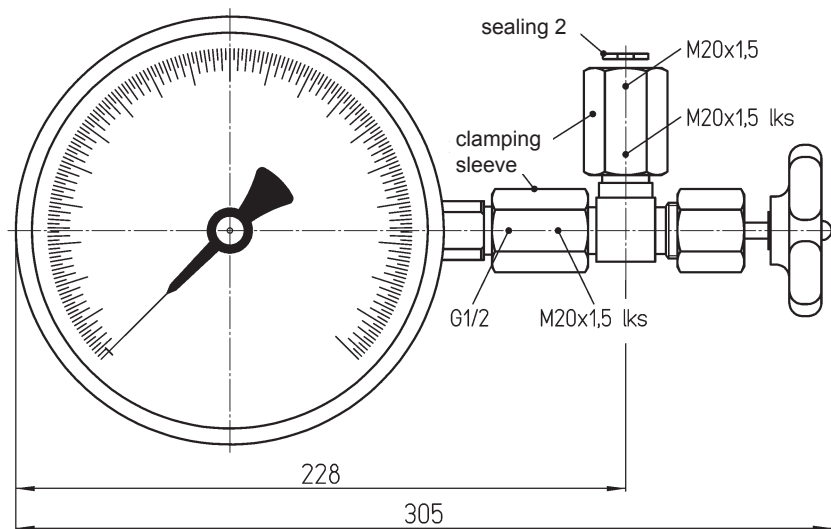
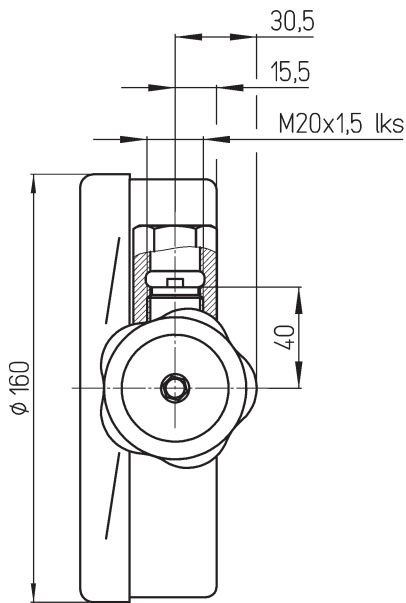
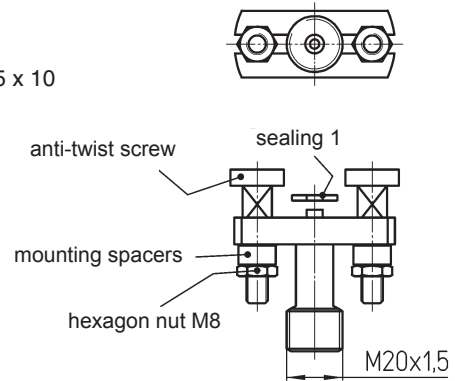
**2102**  
10/10

# Dimensional Data and Weights, Accessories

**Bracket**  
additional to fitting  
for connection to circular  
test flange



**Fitting**  
for connection to  
test flange 60 x 25 x 10



Weights (approx.): 1.60 kg (3.5 lb) pressure gauge RFPB 160  
 3.20 kg (7.1 lb) accessories (with pressure gauge valve and clamping sleeves M 20x1.5)  
 1.20 kg (2.6 lb) case (empty)  
**6.0 kg (13.2 lb) total**