

# HR-S280

- Real-time display the pressure by four LCD, to facilitate customer on-site observation.
- Multi pressure units switchover, reset, backlight, startup or shutdown and other functions.
- Design of low power consumption, battery powered, can last for up to 24 months.
- Equipped with high precision pressure sensor, precision is high, up to 0.1%FS.



HR-S280 intelligent digital pressure gauge is a high precision intelligent digital pressure gauge. It equips with high precision pressure sensor. It can show the real-time pressure accurately. And it has the characteristics of high precision, good long-term stability.

The digital pressure gauge is equipped with large size LCD display, with clear, backlight, units switchover, startup or shutdown, low voltage alarm and other functions. Simple operation, easy to install.

The product adopts 304 stainless steel shell and joint, good shock resistance, capable of measuring the liquid, gas, oil and other non corrosive to stainless steel medium.

HR-S280 intelligent digital pressure gauge is suitable for measuring pressure, portable equipment, check equipment and other pressure measurement fields.

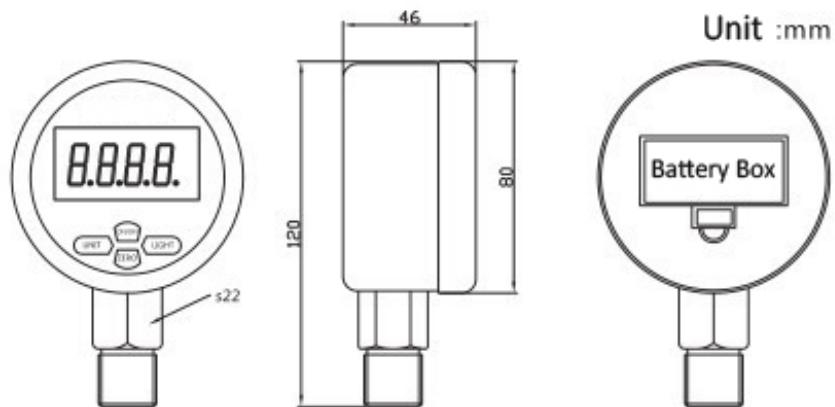
## Applications

1. Machinery and electronics industry
2. Instrument and gauge
3. Pressure laboratory
4. Mechanical engineering and automation
5. Replace the pointer precision pressure gauge, can be a standard pressure gauge, used for the calibration of pressure transmitter and general pressure gauge

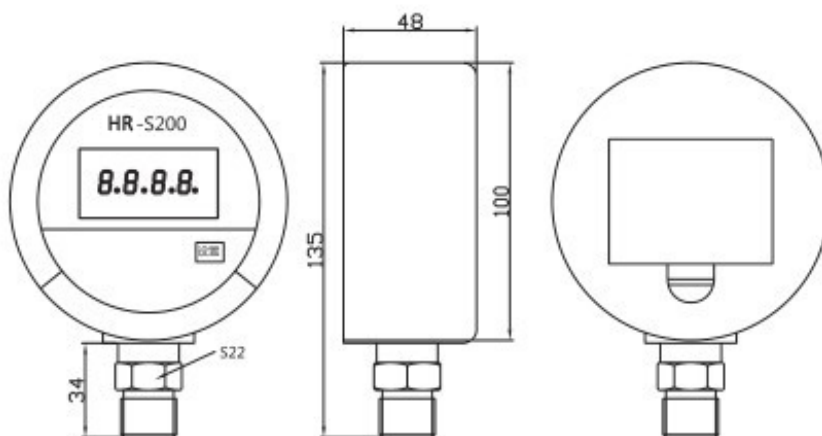
Technique parameter	
Range	0~0.5...1...6...10...16...100...250...400...600Bar
Over load pressure	150%
Backlight color	Some models are white backlight
Dimensions of dial plate	HR-S200 (100mm), HR-S820 (80mm)
Accuracy class	0.2%FS ( indoor temperature)
	0.4%FS (operating temperature -10~50°C)
Long term stability	Typical: ±0.2%FS/year

Operating temperature	-10 ~ 70°C (Special customized -20°C~150°C)
Compensation temperature	0 ~ 70°C
Electric protection	Anti electromagnetic interference design
Sampling frequency	5 times/second
Measurement media	Gas or liquid compatible with 316 stainless steel
Pressure connection	M20*1.5 or customize the thread(G1/2, 1/4NPT, 1/2NPT)
Joint material	304 stainless steel
Shell material	Stainless steel (some models are engineering plastics)
Product function	Startup or shutdown, backlight, reset, units switchover, calibration
Power supply	Battery powered

### External dimension



HR-S280 intelligent digital pressure gauge ( Diameter of the dial is 80mm)



HR-S200 intelligent digital pressure gauge ( Diameter of the dial is 100mm)

## Selection table

Model	Diameter	Range	Connection	Accuracy	Shell material	Weight (KG)
HR-S200	100mm		M20*1.5, G1/4.	1.0% 0.4%	Engineering plastics	0.2
<b>Hr-S280</b>	<b>80mm</b>	<b>0..1,000 KPA</b>	<b>G 1/2"</b>	<b>0.2%</b>	<b>304 stainless steel</b>	0.36



# 1 DIGITAL PRESSURE GAUGE

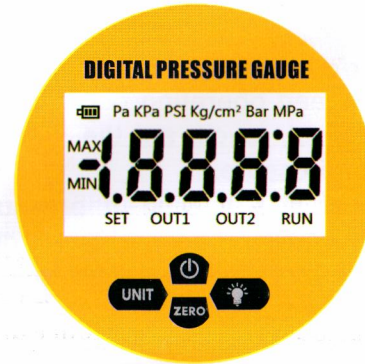
This gauge is a high-precision and intelligent digital pressure gauge. It has a high-precision sensor and display the pressure accurately in real time, equipped with a large size LCD. It has a various of features, such as zero clearing, backlight, on/off button, units, low voltage alarm. And it is convenient to install and easy to operate.

The surface and connector of the product is 304SS. It can be used to measure gas, liquid, oil and other non-corrosive mediums of stainless steel. It applies to these fields: portable pressure measurement, equipment supporting, equipment calibrations.

## SPECIFICATION

Range	Refer to model selection guide
Pressure Types	Gage pressure, negative gage pressure
Overload Capacity	< 40MPa 150%; ≥40MPa 120%
Acc.	0.4%FS
Long-term Stability	0.2%FS/year
Power	3V(Two tripple A battery )
Battery Life	≥12 months
Sampling Frequency	3 Times/sec
Screen	4 Digit LCD
Backlight Color	White
Measurement Medium	Gas, water, oil
Electromagnetic Compatibility	EN61326
Date Retention	EEPROM
Peak Record	Max/Min
Shell	304SS
Connector Material	304SS
Product Functions	Backlight, on/off, unit, pressure calibration

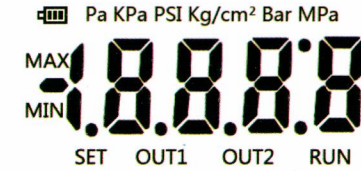
## 2 PANEL/BUTTONS



Symbol	Means
	On/off
	Short press to change pressure unit
	Press for 5 seconds to calibrate zero error
	Short press to turn on/of backlight, long press to keep backlight on

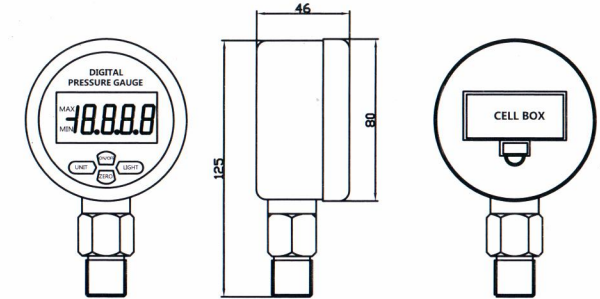
2

## 3 LCD



Display	Means
Pa kPa PSI Kg/cm² Bar Mpa	Pressure Units
MAX	Pressure Maximum
MIN	Pressure Minimum
	Battery Level
Other Uncharted Code	System Parameters

## PRODUCT SIZE



Unit: mm

3



## THE FUNCTION OF PEAK RECORD

Long press "unit" button for 5 seconds, the screen shows the recording maximum after last zero clearance. Short press "unit" button, the figure changes to the minimum. Then short press "unit" button again, it quits the figure records.

When the screen show the recording maximum or minimum, long press the "ZERO" button for 5 seconds to clear all the records, then it will begin the next recording period.

## FAILURE CODE

No.	CODE	DESCRIPTION
1	E-E	Sensor destroyed
2	E-H	The current pressure over the range or sensor destroyed
3	E-P	Entry program of pressure calibration. Operational error, please outage to quit.
4	P-C	Entry program of temperature compensator. Operational error, please outage to quit.

## ATTENTION

1. Please check the packaging, appearance, model and specification when you receive the good.
2. This product uses 2 triple A battery to supply power.
3. Please pay attention to the technical specifications and operating conditions when you use the product, such as the temperature of medium, over pressure.
4. This product has a built-in pressure sensor, belonging to precision device. Don't disassemble the product at your own discretion. Don't touch the membrane with hard objects.
5. During installation and disassembly, please use united wrench. Don't twist the product shell forcibly with your hand to install or disassembly. Otherwise, the damages you caused are outside the scope of warranty.
6. During installation, the product will be influenced by assembly stress. Finishing installation, please reset before you use it.
7. Appearing abnormal phenomenon, if you don't have the specialized equipment and technology, please contact the after-sales technical staff of the company.

**NOTICE:** The damage that caused by non-professional operation which is not according to operation rules is outside the scope of warranty.

# INTRODUCTION

## DIGITAL PRESSURE GAUGE

### FEATURES:

- ◆ **CHANGE UNITS**
- ◆ **ZERO CLEARING**
- ◆ **OPEN THE BACKLIGHT**
- ◆ **PRESSURE CALIBRATION**